



## Office of the Ohio Consumers' Counsel

Your Residential Utility Consumer Advocate

# HISTORICAL RATE CHART

Utility questions, concerns or complaints?

**CALL TOLL FREE:  
1-877-PICKOCC**

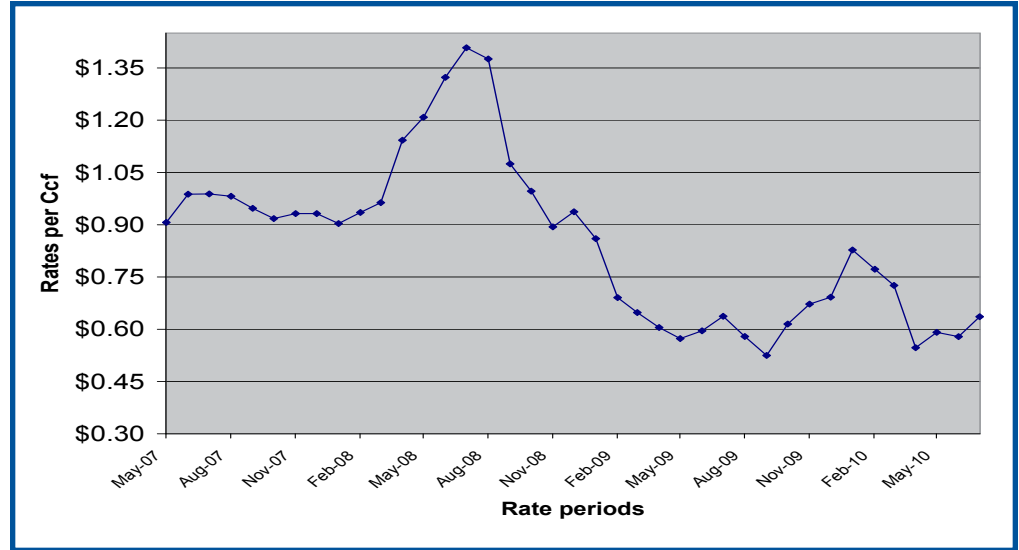
(1-877-742-5622)  
or (614) 466-8574

**Office of the Ohio Consumers' Counsel**  
10 West Broad Street  
Suite 1800, Columbus, OH  
43215-3485

**E-MAIL:**  
occ@occ.state.oh.us

**WEB SITE:**  
www.pickocc.org

# VECTREN ENERGY DELIVERY OF OHIO: HISTORICAL NATURAL GAS RATES



**UPDATED: July 2010**  
*This publication is updated monthly.*

### About these charts

These charts were created to provide Vectren Energy Delivery of Ohio customers with historical information about the company's natural gas rates.

The rates listed from April 2010 and going forward reflect the SCO; rates from October 2008 through March 2010 reflect the SSO; rates prior to October 2008 reflect the GCR.

**For more information about Vectren's natural gas rates, please refer to:**  
*Comparing Your Energy Choices* [http://www.pickocc.org/publications/natural\\_gas/Comparing\\_Your\\_Energy\\_Choices\\_VECTREN.pdf](http://www.pickocc.org/publications/natural_gas/Comparing_Your_Energy_Choices_VECTREN.pdf) or *Vectren Standard Choice Offer: Frequently Asked Questions* [http://www.pickocc.org/publications/natural\\_gas/Vectren\\_SCO\\_FAQ.pdf](http://www.pickocc.org/publications/natural_gas/Vectren_SCO_FAQ.pdf).

Historical rates per Ccf					
05/01/07	\$0.906	06/01/08	\$1.320	07/01/09	\$0.637
06/01/07	\$0.988	07/01/08	\$1.407	08/01/09	\$0.579
07/01/07	\$0.989	08/01/08	\$1.376	09/01/09	\$0.525
08/01/07	\$0.982	09/01/08	\$1.075	10/01/09	\$0.615
09/01/07	\$0.947	10/01/08	\$0.996	11/01/09	\$0.672
10/01/07	\$0.918	11/01/08/	\$0.937	12/01/09	\$0.692
11/01/07	\$0.932	12/01/08	\$0.936	01/01/10	\$0.827
12/01/07	\$0.932	01/01/09	\$0.860	02/01/10	\$0.772
01/01/07	\$0.903	02/01/09	\$0.691	03/01/10	\$0.726
02/01/08	\$0.935	03/01/09	\$0.648	04/01/10	\$0.547
03/01/08	\$0.964	04/01/09	\$0.605	05/01/10	\$0.591
04/01/08	\$1.142	05/01/09	\$0.573	06/01/10	\$0.578
05/01/08	\$1.208	06/01/09	\$0.596	07/01/10	\$0.636